

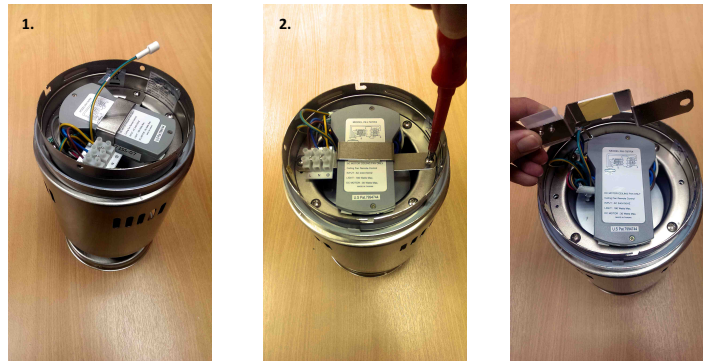
Fantasia Zeta Ceiling Fan

Remote Control Removal Guide

Before working on any electrical appliance ensure you have isolated all power to the unit.
If at all unsure then consult a qualified electrician.

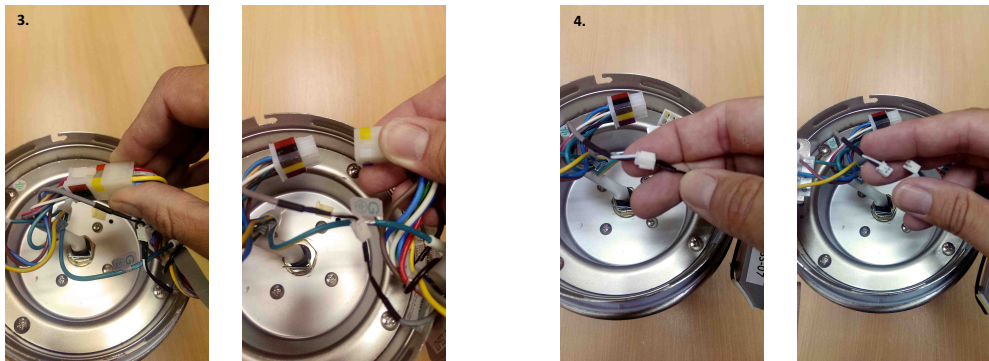
1. Ensure that power to the ceiling fan has been off for 24hrs before removing the Zeta fan from the ceiling. Remove the Zeta fan from the ceiling. Remove the glass shade and also the light bulb from the fan unit. You don't need to remove the fan blades but we have done so in this guide. Place the motor unit on a flat & level surface.

2. Unscrew the 2 x screws that secure the metal strap to the motor housing.



3. Identify the large square connector block which links the remote receiver to the ceiling fan motor. Unclip and separate the block

4. Identify the smaller connector block. Separate the connector.



5. You should now be able to remove the receiver and reverse the process to install the replacement.

